



Mikey & Jeanne
from The Crochet Crowd



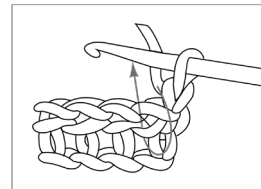
CROCHET | SKILL LEVEL: INTERMEDIATE

ABBREVIATIONS

Approx = Approximately

Beg = Begin(ning)

Camel St = 1 sc into horizontal bar created below st in previous row (bar is below loops normally worked on WS – see diagram)



Ch = Chain(s)

Dc = Double crochet

4-dc cluster = (Dc4tog). (Yoh and draw up a loop in next stitch. Yoh and draw through 2 loops on hook) 4 times. Yoh and draw through all 5 loops on hook

7-dc cluster = (Dc7tog). (Yoh and draw up a loop in stitch. Yoh and draw through 2 loops on hook) 7 times. Yoh and draw through all 8 loops on hook

Dcbp = Yoh and draw up a loop around post of next stitch at back of work, inserting hook from right to left. (Yoh and draw through 2 loops on hook) twice

Dcfp = Yoh and draw up a loop around post of next stitch at front of work, inserting hook from right to left. (Yoh and draw through 2 loops on hook) twice

Hdc = Half double crochet

Rep = Repeat

RS = Right side

Sc = Single crochet

Shell = 7 dc in indicated stitch

Sl st = Slip stitch

MATERIALS

Red Heart® With Love® (198 g/7 oz; 370 yds/338 m)

Version 1

Contrast A Stone (1306) **2 balls**

Contrast B Cameo (1711) **2 balls**

Contrast C Papaya (1939) **2 balls**

Contrast D Iced Aqua (1502) **2 balls**

Size U.S. I/9 (5.5 mm) crochet hook **or size needed to obtain gauge.**
Stitch markers.

Sp(s) = Space(s)

St(s) = Stitch(es)

Tr = Treble crochet

Trfp = (Yoh) twice and draw up a loop around post of next stitch at front of work, inserting hook from right to left. (Yoh and draw through 2 loops on hook) 3 times.

Trfp2tog = [(Yoh) twice and draw up a loop around post of next stitch at front of work, inserting hook from right to left. Yoh and draw through 2 loops on hook] twice. 2 loops remain on hook] twice. Yoh and draw through all 3 loops

Xsc = Skip first stitch. 1 sc in next stitch. Working in front of stitch just made, 1 sc in skipped stitch.

WS = Wrong side

Yoh = Yarn over hook

MEASUREMENT

Approx 54" [137 cm] square.

GAUGE

12 sc and 13 rows = 4" [10 cm].

INSTRUCTIONS

TIPS

- Due to finite amount of yarn in each shade, pattern gauge must be matched to ensure successful results.
- Joining with hdc in corners counts as ch-2 sp.
- Week 1 measurement is approx 12½" x 12½" [32 x 32 cm].
- Week 2 measurement is approx 28" x 28" [71 x 71 cm].
- Week 3 measurement is approx 40" x 40" [101.5 x 101.5 cm].
- Week 4 measurement is approx 47" x 47" [119 x 119 cm].
- Week 5 measurement is approx 54" x 54" [137 x 137 cm].

Notes:

- Join all rnds with sl st to first st (sc, top of ch 3)
- Ch 2 at beg of rnd **does not** count as st.
- Ch 3 at beg of rnd counts as dc.



Week 1

1st rnd: With A, ch 3. 16 dc in 3rd ch from hook. Join. Fasten off. 16 dc.

2nd rnd: Join B with sl st to first dc. Ch 1. 1 sc in same sp as sl st and each dc around. Join. **Do not** fasten off. 16 sc.

3rd rnd: Ch 1. 1 sc in same sp as sl st. 1 sc in next sc. Ch 6. (1 sc in each of next 2 sc. Ch 6) 7 times. Join. Fasten off. 8 ch-6 sps.

4th rnd: Join C with sl st to ch-6 sp. Ch 3. 4 dc in same sp as sl st. 1 tr between next 2 sc. (5 dc in next ch-6 sp. 1 tr between next 2 sc) 7 times. Join. Fasten off. 48 sts.

5th rnd: Join D with sl st to first dc. Ch 3. 1 dc in same sp as sl st. 1 dc in each of next 3 sts. (2 dc in next st. 1 dc in each of next 3 sts) 11 times. Join. Fasten off. 60 dc.

6th rnd: Join A with sl st to first dc. Ch 3. 1 dc in same sp as sl st. 1 dc in each of next 4 dc. (2 dc in next dc. 1 dc in each of next 4 dc) 11 times. Join. Fasten off. 72 dc.

7th rnd: Join B with sl st to first dc. Ch 1. 2 sc in same sp as sl st. 1 sc in each of next 5 dc. (2 sc in next dc. 1 sc in each of next 5 dc) 11 times. Join. **Do not** fasten off. 84 sc.

TIP

- In 8th rnd, the circle transitions to a square.

8th rnd: Ch 1. *1 sc in each of next 8 sc. 1 hdc in each of next 3 sc. 1 dc in each of next 3 sc. (2 tr. Ch 2. 2 tr) in next sc (corner). 1 dc in each of next 3 sc. 1 hdc in each of next 3 sc. Rep from * 3 times more. Join. Fasten off. 8 sc, 6 hdc, 6 dc, 4 tr each side.

TIP

- In 9th rnd, notice the corners are (1 dc. Ch 2. 2 dc). This achieves an odd st count across each side.

9th rnd: Join A with sl st to corner ch-2 sp. Ch 3. 1 dc in same sp as sl st. 1 dc in each st to next corner ch-2 sp. *(1 dc. Ch 2. 2 dc) in corner ch-2 sp. 1 dc in each st to next corner ch-2 sp. Rep from * twice more. 1 dc in first ch-2 sp. Ch 2. Join. Fasten off. 27 dc each side.

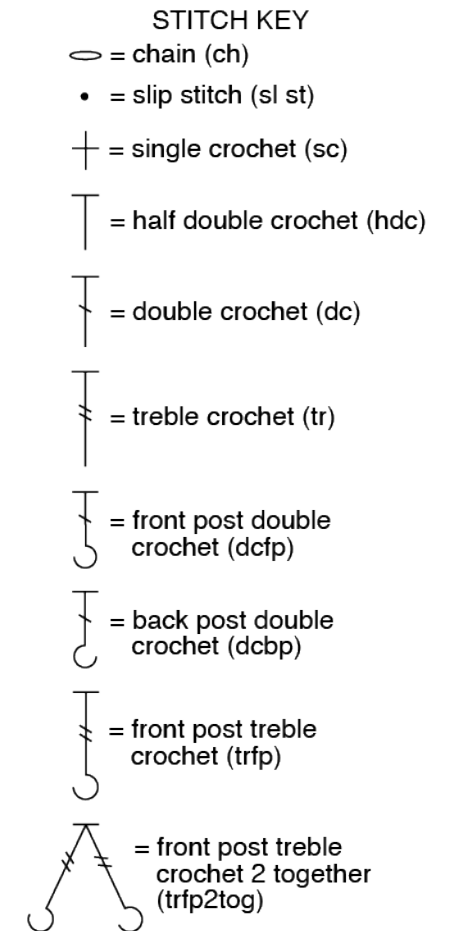
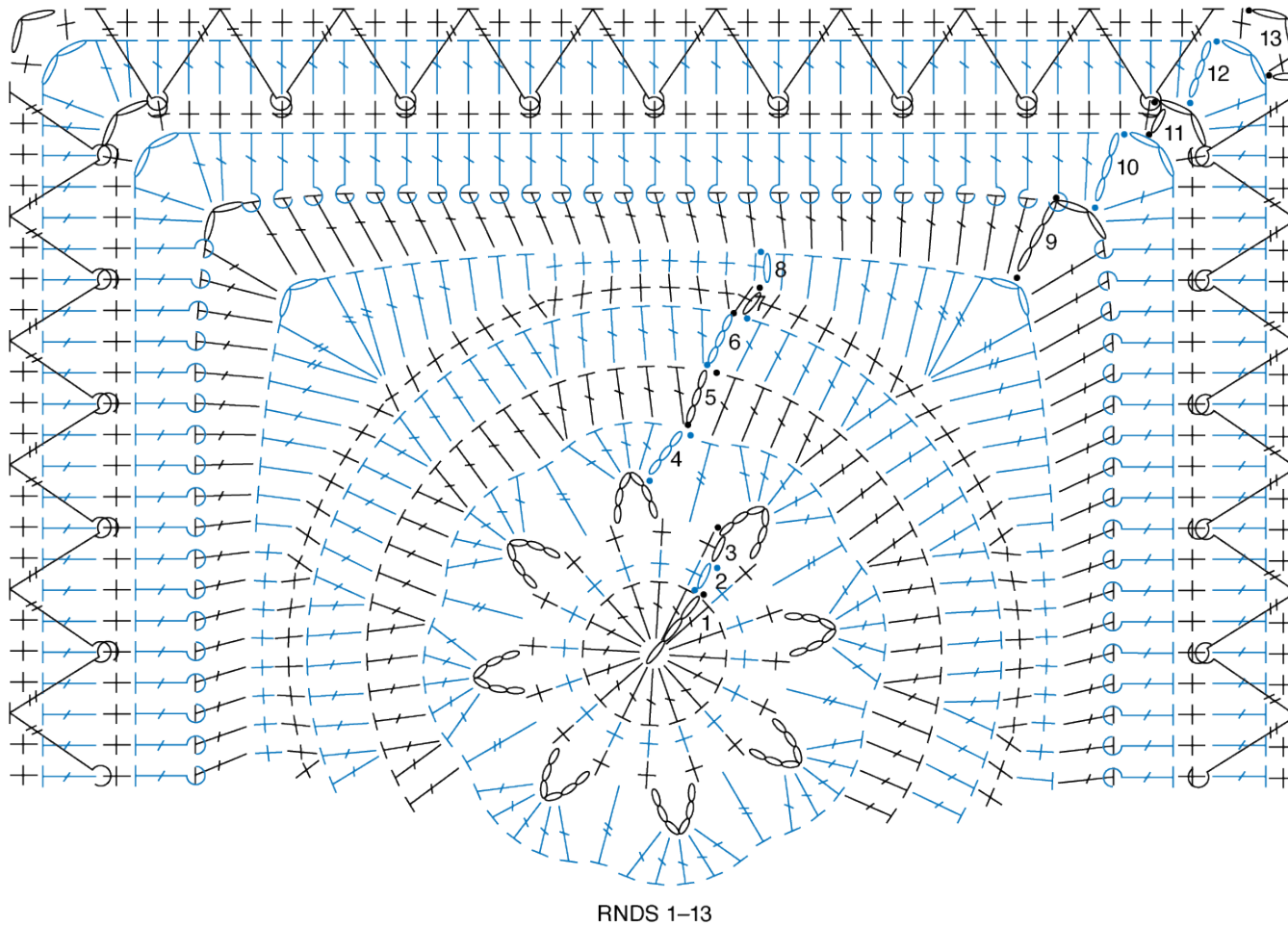
10th rnd: Join C with sl st to corner ch-2 sp. Ch 3. 1 dc in same sp as sl st. *(1 dcbp around post of next dc. 1 dcbp around post of next dc) 13 times. 1 dcbp around post of next dc.** (2 dc. Ch 2. 2 dc) in corner ch-2 sp. Rep from * twice more, then from * to ** once. 2 dc in first corner ch-2 sp. Ch 2. Join. Fasten off. 31 sts each side.

11th rnd: Join A with sl st to corner ch-2 sp. 1 sc in same sp as sl st. 1 sc in each st to next corner ch-2 sp. *(1 sc. Ch 2. 1 sc) in corner ch-2 sp. 1 sc in each st to next corner ch-2 sp. Rep from * twice more. 1 sc in first ch-2 sp. Ch 2. Join. Fasten off. 33 sc each side.

12th rnd: Join B with sl st to corner ch-2 sp. Ch 3. 1 dc in same sp as sl st. *1 dc in each st to corner ch-2 sp.** (2 dc. Ch 2. 2 dc) in corner ch-2 sp. Rep from * twice more, then from * to ** once. 2 dc in first ch-2 sp. Ch 2. Join. Fasten off. 37 dc each side.

13th rnd: Join A with sl st to corner ch-2 sp. Ch 1. (1 sc. Ch 2. 1 sc) in same sp as sl st. *1 trfp around post of first sc 2 rows below. (Skip next dc on working row behind just made st. 1 sc in each of next 3 dc. 1 trfp2tog over same sc as last trfp worked and 4th sc 2 rows below) 8 times. Skip next dc on working row behind just made st. 1 sc in each of next 3 dc. 1 trfp over same sc as last trfp2tog worked. Skip last dc before ch-2 sp on working row behind just made st.** (1 sc. Ch 2. 1 sc) in corner ch-2 sp. Rep from * twice more, then from * to ** once. Join. Fasten off. 29 sc each side.

WEEK 1





Week 2 - Catherine's Wheel

TIPS

- When starting 14th rnd, don't overlook 1st sc when skipping first 2 sts to begin first Shells.
- 14th rnd sides are not symmetrical as we need to adjust sts for proper st count. Take extra note of the ending of each side.

14th rnd: Join D with sl st to corner ch-2 sp. Ch 3. 11 dc in same sp as sl st. [*Skip next 2 sts. 1 sc in next st. Skip next 2 sts. Shell in next st. Rep from * to last 3 sts before corner ch-2 sp. Skip next st. 1 sc in next st. Skip next st.** 12 dc in corner ch-2 sp] 3 times. Rep from * to ** once more. Join. Fasten off. 6 Shells each side.

15th rnd: Join C with sl st to 4th dc of corner 12-dc group. Ch 1. 1 sc in same sp as sl st. [Ch 3. 4-dc cluster over next 4 sts for corner. Ch 3. *1 sc in next st. Ch 3. 7-dc cluster over next 7 sts. Ch 3. Rep from * to corner 12-dc group. 1 sc in next st] 4 times. Join. **Do not** fasten off. 7 partial bottom wheels between 12-dc groups.

16th rnd: Ch 1. 1 sc in same sp as sl st. [12 dc in 4-dc cluster for corner. *1 sc in next sc. Shell in next 7-dc cluster. Rep from * to last sc before corner 4-dc cluster. 1 sc in next sc] 4 times. Join. Fasten off. 7 Shells each side between corner 12-dc groups.

17th and 18 rnds: With A, as 15th and 16th rnds. Break A. 8 full wheels each side between corner 12-dc groups.

19th and 20th rnds: With B, as 15th and 16th rnds. Break B. 9 full wheels each side between corner 12-dc groups.

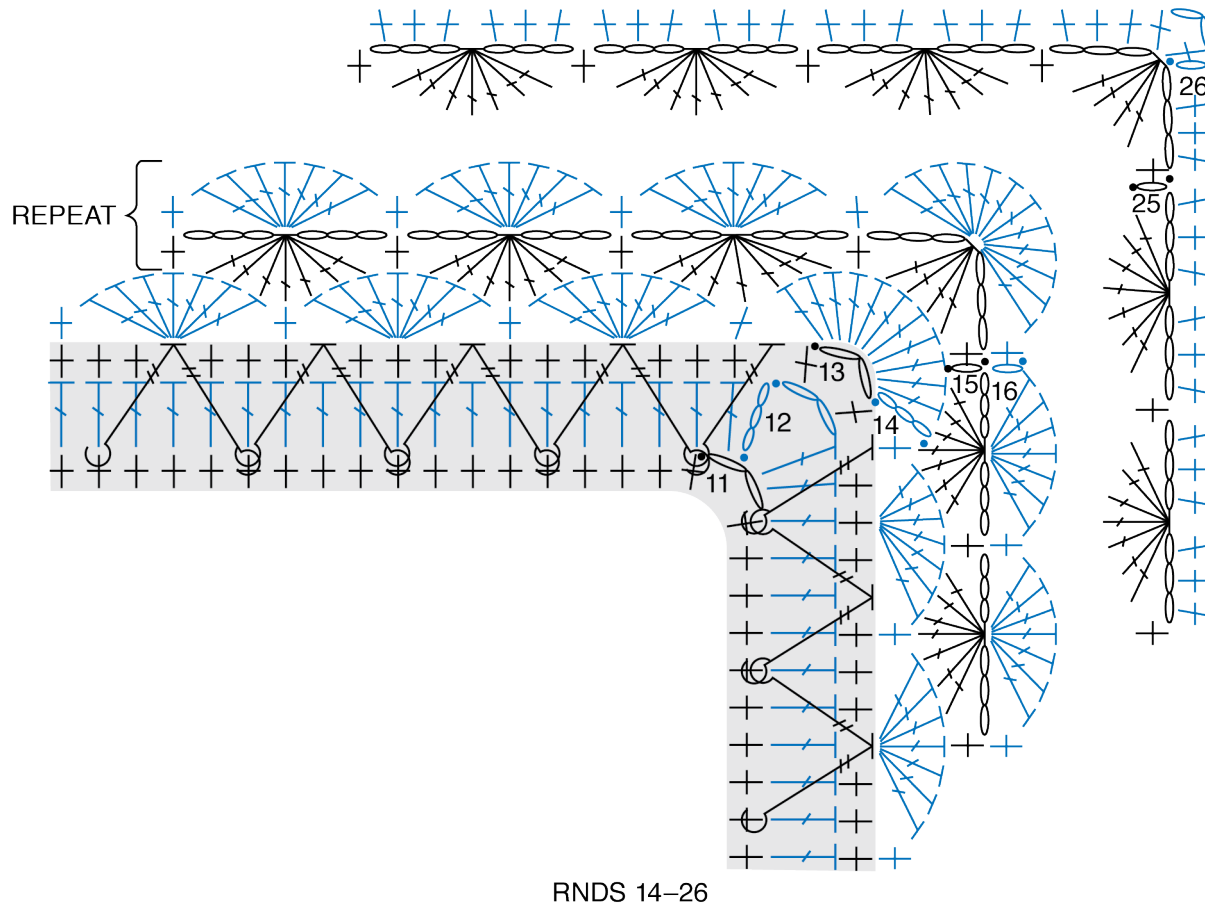
21st and 22nd rnds: With A, as 15th and 16th rnds. Break A. 10 full wheels each side between corner 12-dc groups.

23rd and 24th rnds: With C, as 15th and 16th rnds. Break C. 11 full wheels each side between corner 12-dc groups.

25th rnd: With D, as 15th rnd. Break D. 12 partial wheels each side between corner 12-dc groups.

26th rnd: Join A with sl st to corner 4-dc cluster. Ch 1. (1 sc. Ch 2. 1 sc) in same sp as sl st. [*3 sc in next ch-3 sp. Skip next sc. Rep from * to next corner 4-dc cluster.** (1 sc. Ch 2. 1 sc) in corner 4-dc cluster] 3 times. Rep from * to ** once more. Join. Fasten off. 80 sc each side.

WEEK 2



STITCH KEY

○ = chain (ch)

• = slip stitch (sl st)

† = single crochet (sc)

⌋ = double crochet (dc)

⌋ = front post treble
crochet (trfp)

⌋ = front post treble
crochet 2 together
(trfp2tog)

⌋ = shell

⌋ = 12 dc for corner

⌋ = 4-dc cluster (4-dc cl)

⌋ = 7-dc cluster (7-dc cl)



Week 3 - Alpine Section

See Diagram on page 3.

27th rnd: Join B with sl st to corner ch-2 sp. Ch 1. (1 sc. Ch 2. 1 sc) in same sp as sl st. *1 sc in each sc to next corner ch-2 sp.** (1 sc. Ch 2. 1 sc) in corner ch-2 sp. Rep from * twice more, then from * to ** once. Join. Fasten off. 82 sc each side.

TIP

- In 28th rnd, an odd number of sts each side is required. Note corners are (1 dc. Ch 2. 2 dc).

28th rnd: Join A with sl st to corner ch-2 sp. Ch 3. 1 dc in same sp as sl st. *1 dc in each sc to next corner ch-2 sp.** (1 dc. Ch 2. 2 dc) in corner ch-2 sp. Rep from * twice more, then from * to ** once more. 1 dc in first ch-2 sp. Ch 2. Join. Fasten off. 85 dc each side.

29th rnd: Join C with sl st to corner ch-2 sp. Ch 3. 1 dc in same sp as sl st. [*1 dcfp around post of next dc. 1 dcbp around post of next dc. Rep from * to 1 dc before corner ch-2 sp. 1 dcfp around post of next dc.** (2 dc. Ch 2. 2 dc) in corner ch-2 sp] 3 times. Rep from * to ** once more. 2 dc in first corner ch-2 sp. Ch 2. Join. Fasten off. 89 sts each side.

30th rnd: Join A with sl st to corner ch-2 sp. Ch 1. (1 sc. Ch 2. 1 sc) in same sp as sl st. *1 sc in each st to next corner ch-2 sp.** (1 sc. Ch 2. 1 sc) in corner ch-2 sp. Rep from * twice more, then from * to ** once. Join. Fasten off. 91 sc each side.

31st rnd: Join B with sl st to corner ch-2 sp. Ch 3. 1 dc in same sp as sl st. 1 dc in each sc to corner ch-2 sp. *(2 dc. Ch 2. 2 dc) in corner ch-2 sp. 1 dc in each sc to corner ch-2 sp. Rep from * twice more. 2 dc in first ch-2 sp. Ch 2. Join. Fasten off. 95 dc each side.

32nd rnd: Join A with sl st to corner ch-2 sp. Ch 1. (1 sc. Ch 2. 1 sc) in same sp as sl st. *1 sc in next dc. 1 trfp around 2nd sc 2 rows below. (Skip next dc on working row behind just made st. 1 sc in each of next 3 dc. 1 trfp2tog over same sc as last trfp worked

and 4th sc 2 rows below) 22 times. Skip next dc on working row behind just made st. 1 sc in each of next 3 dc. 1 trfp over same sc as last trfp2tog worked. Skip next dc. 1 sc in next dc.** (1 sc. Ch 2. 1 sc) in corner ch-2 sp. Rep from * twice more, then from * to ** once more. Join. Fasten off. 97 sts each side.

TIP

- When making hdc corners, mark tops of hdc stitches as you crochet so you can clearly see where sides start and end. This will help you avoid skipping or adding stitches in next round.

33rd rnd: Join D with sl st to corner ch-2 sp. Ch 3. 1 dc in same sp as sl st. [*1 dc in each st to corner ch-2 sp.** (2 dc. Ch 2. 2 dc) in corner ch-2 sp] 3 times. Rep from * to ** once more. 2 dc in first ch-2 sp. Join with hdc to first dc. **Do not** fasten off. 101 dc each side.

34th rnd: Ch 1. 1 sc around post of joining hdc. *1 sc in each dc to corner ch-2 sp.** (1 sc. Ch 2. 1 sc) in corner ch-2 sp. Rep from * twice more, then from * to ** once. 1 sc around post of joining hdc. Ch 2. Join. Fasten off. 103 sc each side.

35th rnd: Join C with sl st to corner ch-2 sp. Ch 1. 1 hdc in same sp as sl st. 1 dc in next sc. 1 dcfp around post of first dc 2 rnds below. [*Skip next sc on working row behind just made st. 1 dc in next sc. 1 dcfp around post of next dc 2 rnds below. Rep from * to 1 sc before corner ch-2 sp. 1 dc in next sc.** (1 hdc. Ch 2. 1 hdc) in corner ch-2 sp] 3 times. Rep from * to ** once more. 1 hdc in first ch-2 sp. Join with hdc to first hdc. 105 sts each side.

36th rnd: As 34th rnd. 107 sc each side.

37th rnd: Join D with sl st to corner ch-2 sp. Ch 1. 1 hdc in same sp as sl st. 1 dc in each of next 2 sc. 1 dcfp around first dc 2 rnds below. [*Skip next sc on working row behind just made st. 1 dc in next sc. 1 dcfp around post of next dc 2 rnds below. Rep from * to 2 sts before corner ch-2 sp. 1 dc in each of next 2 sc.** (1 hdc. Ch 2. 1 hdc) in corner ch-2 sp] 3 times. Rep from * to ** once more. 1 hdc in first ch-2 sp. Ch 2. Join with hdc to first hdc. 109 sts each side.

38th rnd: As 34th rnd. 111 sc each side. **Turn.**

Houndstooth Stitching Rounds Begin

TIP

- Work houndstooth stitch for next 3 rnds. This requires turning Afghan over between rounds (WS and RS) in order to achieve correct houndstooth stitch.

39th rnd: (WS). Join B with sl st to corner ch-2 sp. Ch 1. 1 sc in same sp as sl st. 1 dc in next sc. [*1 sc in next sc. 1 dc in next sc.* Rep from * to * to next corner ch-2 sp. (1 sc. Ch 2. 1 sc) in corner ch-2 sp] 3 times. Rep from * to * to first corner ch-2 sp. 1 sc in first ch-2 sp. Join with 1 hdc to first sc. 113 sts each side. **Turn.**

40th rnd: (RS). Ch 1. 1 sc around post of joining hdc. 1 dc in next sc. [*1 sc in next dc. 1 dc in next sc. Rep * to next corner ch-2 sp.** (1 sc. Ch 2. 1 sc) in corner ch-2 sp] 3 times. Rep from * to ** once more. 1 sc in first ch-2 sp. Ch 2. Join. Fasten off. 115 sts each side. **Turn.**

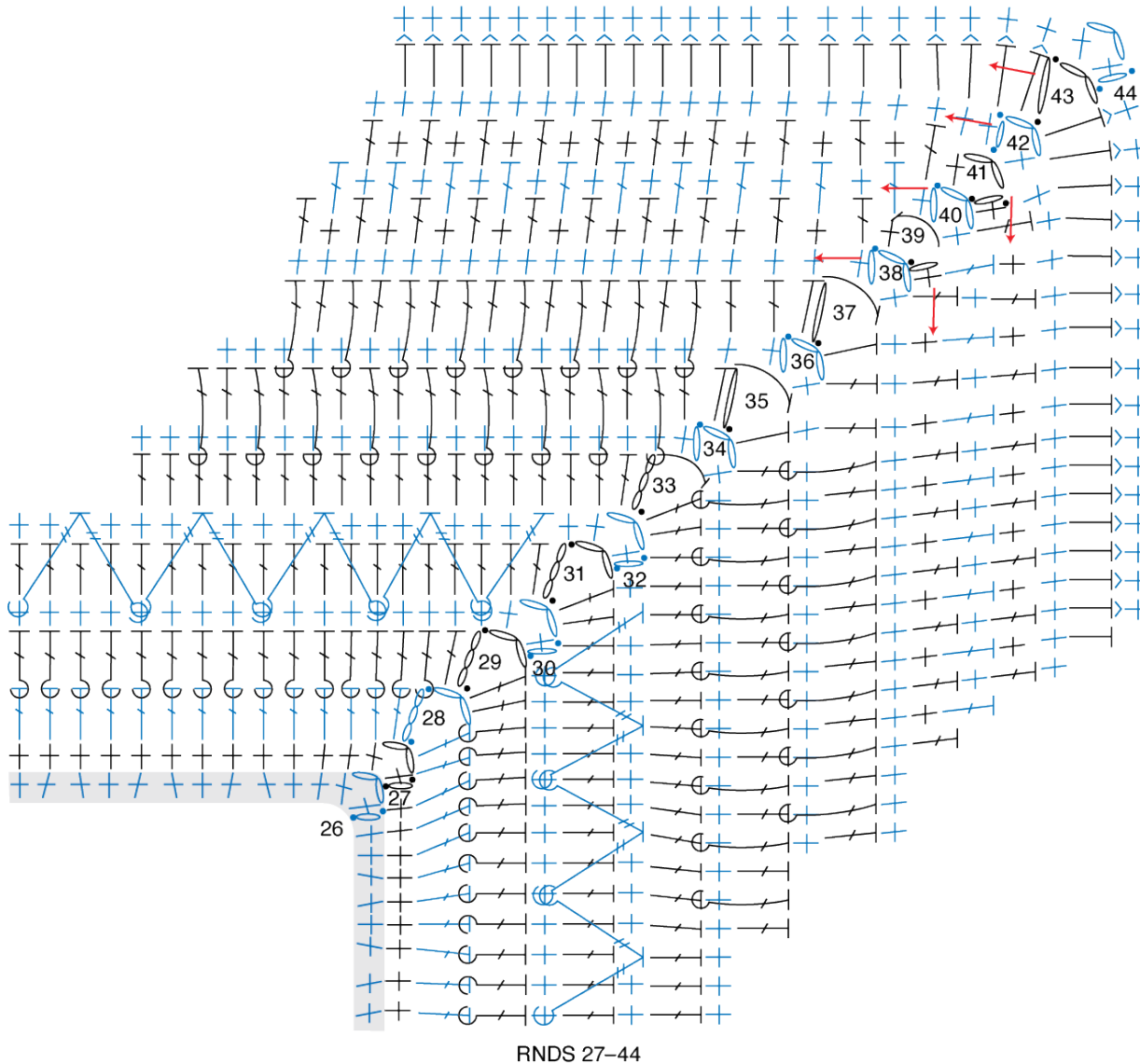
41st rnd: (WS). Join A with sl st to corner ch-2 sp. Ch 1. 1 sc in same sp as sl st. 1 dc in next sc. [*1 sc in next sc. 1 dc in next sc.* Rep from * to * to next corner ch-2 sp. (1 sc. Ch 2. 1 sc) in corner ch-2 sp] 3 times. Rep from * to * once more. 1 sc in first ch-2 sp. Join. Fasten off. 117 sts each side. **Turn.**

42nd rnd: (RS). Join C with sl st to corner ch-2 sp. Ch 1. (1 sc. Ch 2. 1 sc) in same sp as sl st. *1 sc in each sc to next corner ch-2 sp.** (1 sc. Ch 2. 1 sc) in corner ch-2 sp. Rep from * twice more, then from * to ** once more. Join. Fasten off. 119 sc each side. **Do not turn.**

43rd rnd: Join D with sl st to corner ch-2 sp. Ch 1. 1 hdc in same sp as sl st. *1 hdc in each sc to next corner ch-2 sp.** (1 hdc. Ch 2. 1 hdc) in corner ch-2 sp. Rep from * twice more, then from * to ** once. 1 hdc in first ch-2 sp. Join. Fasten off. 121 hdc each side.

44th rnd: Join C with sl st to corner ch-2 sp. Ch 1. (1 sc. Ch 2. 1 sc) in same sp as sl st *1 camel st in each hdc to corner ch-2 sp** (1 sc. Ch 2. 1 sc) in corner ch-2 sp. Rep from * twice more, then from * to ** once. Join. Fasten off. 123 sc each side. **Turn.**

WEEK 3



STITCH KEY

- = chain (ch)
- = slip stitch (sl st)
- + = single crochet (sc)
- ⋈ = camel stitch (camel st)
- ┐ = half double crochet (hdc)
- ┘ = double crochet (dc)
- ┘ = front post double crochet (dcfp)
- ┘ = back post double crochet (dcbp)
- ┘ = front post treble crochet (trfp)
- ┘ = front post treble crochet 2 together (trfp2tog)
- ↔ = direction of work



Week 4 - Houndstooth Stitching Revisited

TIP

- Next section of Afghan is a mirror image of colors and stitches worked in opposite order.
- When working houndstooth stitch rounds again be sure to turn Afghan as required.

45th rnd: (WS). Join A with sl st to corner ch-2 sp. Ch 1. 1 sc in same sp as sl st. 1 dc in next sc. [*1 sc in next sc. 1 dc in next sc.* Rep from * to * to next corner ch-2 sp. (1 sc. Ch 2. 1 sc) in corner ch-2 sp] 3 times. Rep from * to * to first corner ch-2 sp. 1 sc in first ch-2 sp. Join. Fasten off. 125 sts each side. **Turn.**

46th rnd: (RS). Join B with sl st to corner ch-2 sp. Ch 1. 1 sc in same sp as sl st. 1 dc in next sc. [*1 sc in next dc. 1 dc in next sc. Rep * to next corner ch-2 sp.** (1 sc. Ch 2. 1 sc) in corner ch-2 sp] 3 times. Rep from * to ** once more. 1 sc in first ch-2 sp. Ch 2. Join with 1 hdc to first sc. 127 sts each side. **Turn.**

47th rnd: (WS). Ch 1. 1 sc around post of joining hdc. 1 dc in next sc. [*1 sc in next sc. 1 dc in next sc.* Rep from * to * to next corner ch-2 sp. (1 sc. Ch 2. 1 sc) in corner ch-2 sp] 3 times. Rep from * to * once more. 1 sc in first ch-2 sp. Join. Fasten off. 129 sts each side. **Turn.**

TIP

- Afghan is no longer turned to WS for remainder of this project.

48th rnd: (RS). Join D with sl st to corner ch-2 sp. Ch 3. 1 dc in same sp as sl st. *1 dc in each st to corner ch-2 sp.** (2 dc. Ch 2. 2 dc) in corner ch-2 sp. Rep from * twice more, then from * to ** once. 2 dc in first ch-2 sp. Join with 1 hdc to first sc. 133 dc each side.

49th rnd: Ch 1. 1 sc around post of joining hdc. *1 sc in each dc to corner ch-2 sp.** (1 sc. Ch 2. 1 sc) in corner ch-2 sp. Rep from * twice more, then from * to ** once. 1 sc around post of joining hdc. Ch 2. Join. Fasten off. 135 sc each side.

50th rnd: Join C with sl st to corner ch-2 sp. Ch 1. 1 hdc in same sp as sl st. 1 dc in next sc. 1 dcfp around post of first dc 2 rnds below. [*Skip next sc on working row behind just made st. 1 dc in next sc. 1 dcfp around post of next dc 2 rnds below. Rep from * to 1 sc before corner ch-2 sp. 1 dc in next sc.** (1 hdc. Ch 2. 1 hdc) in corner ch-2 sp] 3 times. Rep from * to ** once more. 1 hdc in first ch-2 sp. Ch 2. Join with hdc to first hdc. 141 sts per side.

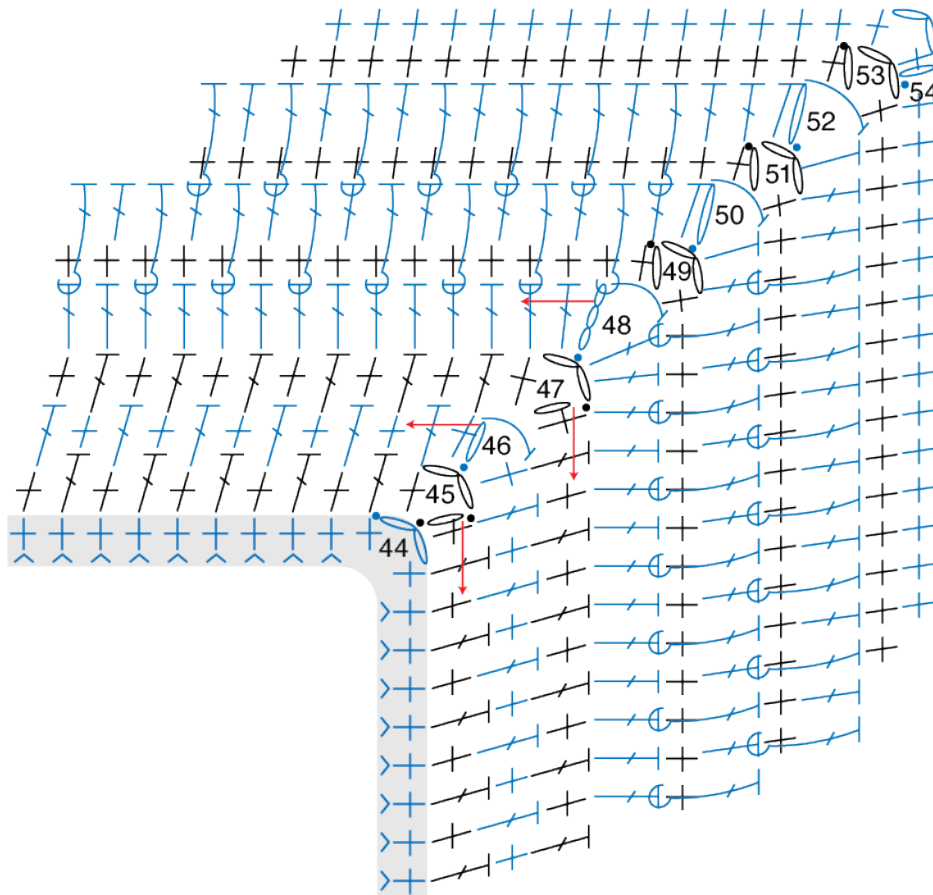
51st rnd: Ch 1. 1 sc around post of joining hdc. *1 sc in each dc to corner ch-2 sp.** (1 sc. Ch 2. 1 sc) in corner ch-2 sp. Rep from * twice more, then from * to ** once more. 1 sc around post of joining hdc. Ch 2. Join. Fasten off. 139 sc each side.

52nd rnd: Join D with sl st to corner ch-2 sp. Ch 1. 1 hdc in same sp as sl st. 1 dc in each of next 2 sc. 1 dcfp around first dc 2 rnds below. [*Skip next sc on working row behind just made st. 1 dc in next sc. 1 dcfp around post of next dc 2 rnds below. Rep from * to 2 sts before corner ch-2 sp. 1 dc in each of next 2 sc.** (1 hdc. Ch 2. 1 hdc) in corner ch-2 sp] 3 times. Rep from * to ** once more. 1 hdc in first ch-2 sp. Ch 2. Join with hdc to first hdc. 141 sts per side.

53rd rnd: As 51st rnd. 143 sc each side.

54th rnd: Join A with sl st to corner ch-2 sp. Ch 1. (1 sc. Ch 2. 1 sc) in same sp as sl st. *1 sc in each sc to next corner ch-2 sp.** (1 sc. Ch 2. 1 sc) in corner ch-2 sp. Rep from * twice more, then from * to ** once. Join. Fasten off. 145 sc each side.

WEEK 4



RNDS 45-54

- STITCH KEY
- = chain (ch)
 - = slip stitch (sl st)
 - ⊥ = single crochet (sc)
 - ⊥ = camel stitch (camel st)
 - ⊥ = half double crochet (hdc)
 - ⊥ = double crochet (dc)
 - ⊥ = front post treble crochet (trfp)
 - ↔ = direction of work



Week 5 - BORDER - Catherine's Wheel

- TIP**
- Next round, skip first 3 sts before starting the first group of 7 dc and skip last 3 sts at end of each side. This brings the wheels into balance.

55th rnd: Join B with sl st to corner ch-2 sp. Ch 3 (counts as dc). 11 dc in same sp as sl st. [Skip next 3 sc. 1 sc in next sc. *Skip next 2 sc. 7 dc in next sc. Skip next 2 sc. 1 sc in the next sc. Rep from * to last 3 sc before corner ch-2 sp.** 12 dc in next corner ch-2 sp] 3 times. Skip next 3 sc. 1 sc in next sc. Rep from * to ** once more. Join. Fasten off. 23 partial top wheels each side.

56th rnd: Join C with sl st to 4th dc of corner 12-dc group. Ch 1. 1 sc in same sp as sl st. [Ch 3. 4-dc cluster over next 4 sts for corner. Ch 3. *1 sc in next st. Ch 3. 7-dc cluster over next 7 sts. Ch 3. Rep from * to corner 12-dc group. 1 sc in next st] 4 times. Join. **Do not** fasten off. 24 partial bottom wheels each side.

57th rnd: Ch 1. 1 sc in same sp as sl st. [12 dc in 4-dc cluster for corner. *1 sc in next sc. Shell in next 7-dc cluster. Rep from * to last sc before corner 4-dc cluster. 1 sc in next sc] 4 times. Join. Fasten off. 24 partial top wheels each side.

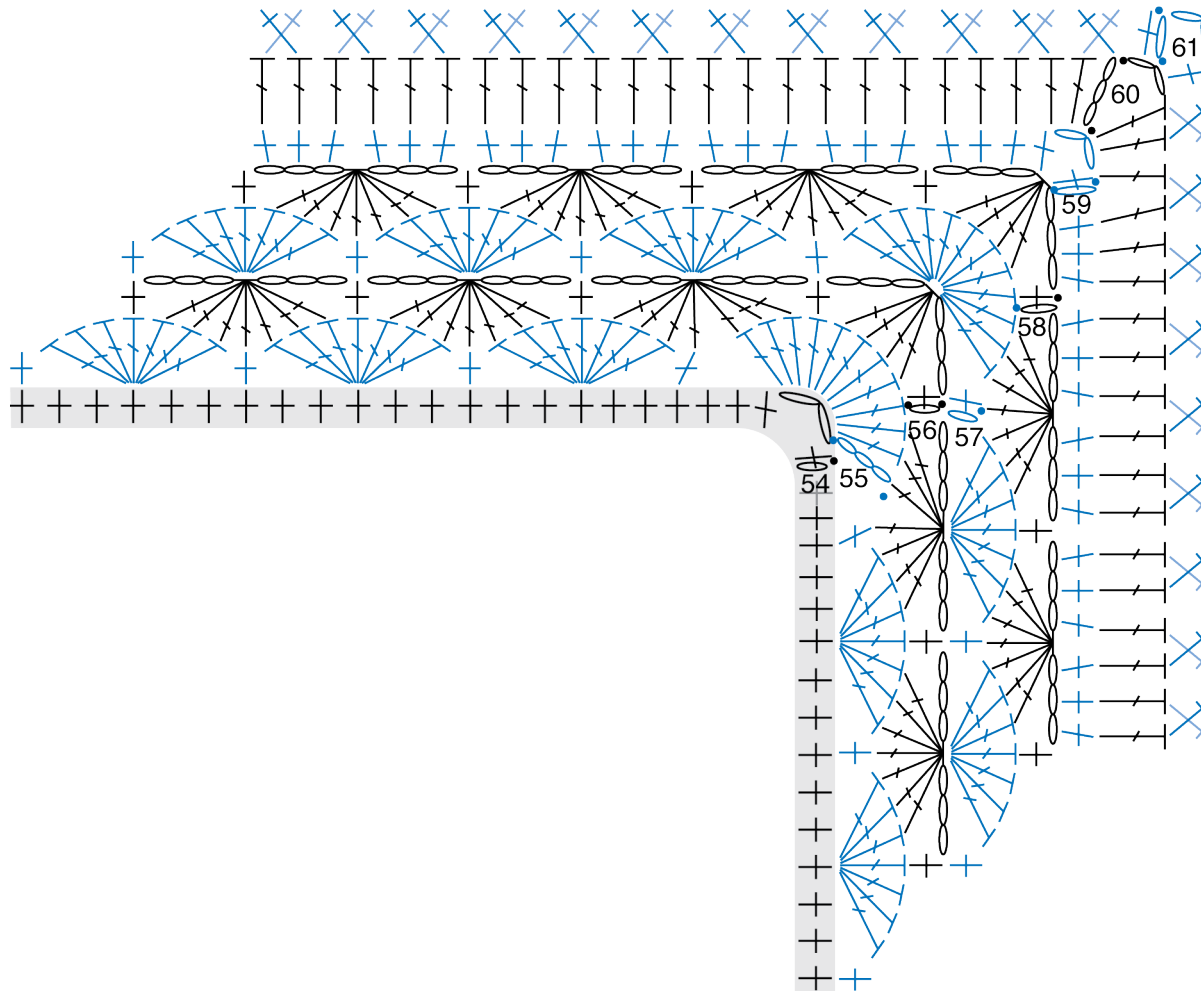
58th rnd: With B, as 56th rnd. 25 partial bottom wheels each side.

59th rnd: Join A with sl st to corner 4-dc cluster. Ch 1. (1 sc. Ch 2. 1 sc) in same sp as sl st. [*3 sc in next ch-3 sp. Skip next sc. Rep from * to next corner 4-dc cluster.** (1 sc. Ch 2. 1 sc) in corner 4-dc cluster] 3 times. Rep from * to ** once more. Join. Fasten off. 158 sc each side.

60th rnd: Join D with sl st to corner ch-2 sp. Ch 3. 1 dc in same sp as sl st. *1 dc in each sc to corner ch-2 sp.** (2 dc. Ch 2. 2 dc) in corner ch-2 sp. Rep from * twice more, then from * to ** once. 2 dc in first ch-2 sp. Ch 2. Join. Fasten off. 162 dc each side.

61st rnd: Join A with sl st to corner ch-2 sp. Ch 1. 1 sc in same sp as sl st. [*Xsc over next 2 dc. Rep from * to next corner ch-2 sp.** (1 sc. Ch 1. 1 sc) in corner ch-2 sp] 3 times. Rep from * to ** once more. 1 sc in first ch-2 sp. Ch 2. Join. Fasten off.

WEEK 5



BORDER
RNDs 55–61

STITCH KEY

○ = chain (ch)

• = slip stitch (sl st)

⊥ = single crochet (sc)

⌋ = double crochet (dc)

✕ = X single crochet (Xsc)

= shell

= corner shell

= 4-dc cluster (4-dc cl)

= 7-dc cluster (7-dc cl)