



ULTIMATE SACRIFICE



CROCHET SHAWL

Before You Begin

This shawl looks breath-taking in a gradient yarn. In these pictures, I have used a custom 200g gradient in black to turquoise. You can create the subtle 'illuminated heart' effect by starting with a dark shade, then switching to the brighter end of the gradient yarn when the heart is complete. Alternatively, you could let the heart take the limelight by starting with the brighter end of the gradient, then changing to the deeper end. I notify you when the heart section is complete, although you can see how you like your shawl as it progresses.

I would love for you to share your creation from this pattern, either on Instagram with the hashtag #ultimatesacrificeshawl or on ravelry.

- Garment Type: Shawl
- Terminology: US
- Instagram Hashtag:
#ultimatesacrificeshawl
- Difficulty Level: ❶❷❸❹❺

- Hook size: 3.50mm/US E
- Yarn Weight: Fingering/4Ply
- Recommended Yarn: Merino Twin
Base Gradient by Wollelfe on etsy
- Amount Req. approx. 200g / 800mtrs

Pattern Notes

We begin this shawl with solid rows of Double Crochet stitches, increasing in certain areas to establish the shape. This first half of the shawl is interspersed with simple lace rows, to create the look of a growing heart. We then work our way into the second half of the shawl which is made up of shell stitches ('2Dc, 2Ch, 2Dc', worked into a Chain 2 Space). The shells within the upper, 'wings' section widen every 4th row, until we reached the last row. The dramatic outline of these wider shell stitches gives such an impact on its own, that no border is required to complete it.

Stitch count is noted in brackets at the end of each row. Further information regarding stitch count is provided within the pattern as you progress. Stitches written in bold font represent the center stitches of each row.

'Chain 1 spaces' are counted as stitches, so if for example you are instructed to make "1dc in each of the next 10 sts", this will also include working into chain spaces. Likewise when instructed to "skip the next 3 sts" this will require you to skip 1Dc, 1Ch, and 1Dc.

The first stitch of every row is created by making a 'Standing Double Crochet'. If you are uncomfortable with this stitch, you can replace it with 3Ch, making the last stitch of each row in the top of the 3Ch accordingly.

This shawl is worked back and forth, so you turn the work at the end of each row, ready to start the next row. I have addressed this instruction here, rather than write 'Turn' at the end of each row throughout the pattern.

Gauge is actually not too important, however for a shawl measuring 110cms/43" side to side (see the size guide on page 11), work Rows 1-5 on a 3.5mm/US:E hook (as recommended in boxes above). After blocking, this swatch should measure approximately 13cm/5" from side to side and 8.5cm/3.4" from starting point to the bottom tip. Adjust hook size if necessary.

Abbreviations:

Ch	=	Chain
Sc	=	Single Crochet
Dc	=	Double Crochet
Trb	=	Treble
Ch2sp	=	Chain-2-Space
st	=	stitch

Instructions:

Starting with the Black end of the gradient yarn cake, make a Magic Circle.

Row 1: In the Magic Circle, make: 4Dc, **2Ch**, 4Dc. [10 sts]

Row 2: 2Dc in each of the next 3 sts, 1Dc in the next st,
in the next Ch2sp make: 2Dc, 2Ch, 2Dc,
1Dc in the next st, 2Dc in each of the next 3 sts. [20 sts]

Row 3: (2Dc in the next st, 1Dc in the next st) x 3,
1Dc in each of the next 3 sts,
in the next Ch2sp make: 2Dc, 2Ch, 2Dc,
1Dc in each of the next 3 sts,
(1Dc in the next st, 2Dc in the next st) x 3. [30 sts]

Row 4: (2Dc in the next st, 1Dc in each of the next 2 sts) x 3,
1Dc in each of the next 5 sts,
in the next Ch2sp make: 2Dc, 2Ch, 2Dc,
1Dc in each of the next 5 sts,
(1Dc in each of the next 2 sts, 2Dc in the next st) x 3. [40 sts]

Row 5: (2Dc in the next st, 1Dc in each of the next 3 sts) x 3,
1Dc in each of the next 7 sts,
in the next Ch2sp make: 2Dc, 2Ch, 2Dc,
1Dc in each of the next 7 sts,
(1Dc in each of the next 3 sts, 2Dc in the next st) x 3. [50 sts]

Row 6: LACE ROW (*note: during lace rows, you don't always skip a stitch after making 1Ch*)
*1Dc in the next st, 1Ch, (1Dc in the next st, 1Ch, skip the next st) x 2,
Repeat from * 2 more times,
(1Dc in the next st, 1Ch, skip the next st) x 4,
1Dc in the next st, 1Ch,
in the next Ch2sp make: 1Dc, 2Ch, 1Dc,
1Ch, 1Dc in the next st,
(1Ch, skip the next st, 1Dc in the next st) x 4,
**(1Ch, skip the next st, 1Dc in the next st) x 2, 1Ch, 1Dc in the next st,
Repeat from ** 2 more times. [60 sts]

Row 7: (2Dc in the next st, 1Dc in each of the next 5 sts) x 3,
1Dc in each of the next 11 sts,
in the next Ch2sp make: 2Dc, 2Ch, 2Dc,
1Dc in each of the next 11 sts,

(1Dc in each of the next 5 sts, 2Dc in the next st) x 3. [70 sts]

Row 8: (2Dc in the next st, 1Dc in each of the next 6 sts) x 3,
1Dc in each of the next 13 sts,
in the next Ch2sp make: 2Dc, 2Ch, 2Dc,
1Dc in each of the next 13 sts,
(1Dc in each of the next 6 sts, 2Dc in the next st) x 3. [80 sts]

Row 9: (2Dc in the next st, 1Dc in each of the next 7 sts) x 3,
1Dc in each of the next 15 sts,
in the next Ch2sp make: 2Dc, 2Ch, 2Dc,
1Dc in each of the next 15 sts,
(1Dc in each of the next 7 sts, 2Dc in the next st) x 3. [90 sts]

Row 10: (2Dc in the next st, 1Dc in each of the next 8 sts) x 3,
1Dc in each of the next 17 sts,
in the next Ch2sp make: 2Dc, 2Ch, 2Dc,
1Dc in each of the next 17 sts,
(1Dc in each of the next 8 sts, 2Dc in the next st) x 3. [100 sts]

Row 11: (2Dc in the next st, 1Dc in each of the next 9 sts) x 3,
1Dc in each of the next 19 sts,
in the next Ch2sp make: 2Dc, 2Ch, 2Dc,
1Dc in each of the next 19 sts,
(1Dc in each of the next 9 sts, 2Dc in the next st) x 3. [110 sts]

Change color to the Turquoise end of the gradient yarn cake and fasten off the black.

Row 12: LACE ROW
*1Dc in the next st, 1Ch, (1Dc in the next st, 1Ch, skip the next st) x 5,
Repeat from * 2 more times,
(1Dc in the next st, 1Ch, skip the next st) x 10,
1Dc in the next st, 1Ch,
in the next Ch2sp make: 1Dc, 2Ch, 1Dc,
1Ch, 1Dc in the next st,
(1Ch, skip the next st, 1Dc in the next st) x 10,
**(1Ch, skip the next st, 1Dc in the next st) x 5, 1Ch, 1Dc in the next st,
Repeat from ** 2 more times. [120 sts]

Row 13: (2Dc in the next st, 1Dc in each of the next 11 sts) x 3,
1Dc in each of the next 23 sts,
in the next Ch2sp make: 2Dc, 2Ch, 2Dc,
1Dc in each of the next 23 sts,
(1Dc in each of the next 11 sts, 2Dc in the next st) x 3. [130 sts]

Row 14: (2Dc in the next st, 1Dc in each of the next 12 sts) x 3,
1Dc in each of the next 25 sts,
in the next Ch2sp make: 2Dc, 2Ch, 2Dc,
1Dc in each of the next 25 sts,
(1Dc in each of the next 12 sts, 2Dc in the next st) x 3. [140 sts]

Row 15: (2Dc in the next st, 1Dc in each of the next 13 sts) x 3,
1Dc in each of the next 27 sts,
in the next Ch2sp make: 2Dc, 2Ch, 2Dc,
1Dc in each of the next 27 sts,

(1Dc in each of the next 13 sts, 2Dc in the next st) x 3. [150 sts]

Row 16: (2Dc in the next st, 1Dc in each of the next 14 sts) x 3,
1Dc in each of the next 29 sts,
in the next Ch2sp make: 2Dc, 2Ch, 2Dc,
1Dc in each of the next 29 sts,
(1Dc in each of the next 14 sts, 2Dc in the next st) x 3. [160 sts]

Row 17: (2Dc in the next st, 1Dc in each of the next 15 sts) x 3,
1Dc in each of the next 31 sts,
in the next Ch2sp make: 2Dc, 2Ch, 2Dc,
1Dc in each of the next 31 sts,
(1Dc in each of the next 15 sts, 2Dc in the next st) x 3. [170 sts]

Row 18: LACE ROW (*note: the beginning and end of this lace row is slightly different to the previous lace rows*)
1Dc in the next st, (1Dc in the next st, 1Ch, skip the next st) x 8,
*1Dc in the next st, 1Ch, (1Dc in the next st, 1Ch, skip the next st) x 8,
Repeat from * 1 more time,
(1Dc in the next st, 1Ch, skip the next st) x 16,
1Dc in the next st, 1Ch,
in the next Ch2sp make: 1Dc, 2Ch, 1Dc,
1Ch, 1Dc in the next st,
(1Ch, skip the next st, 1Dc in the next st) x 16,
**(1Ch, skip the next st, 1Dc in the next st) x 8, 1Ch, 1Dc in the next st,
Repeat from ** 1 more time,
(1Ch, skip the next st, 1Dc in the next st) x 8, 1Dc in the next st. [178 sts]

Now we will start our Shell Rows. The first stitch of each row is still a Double Crochet stitch, however the last stitch of each row will be a Treble stitch. This alternating of Dc and Trb stitches across the top is to give the shawl a little bit of extra stretch. Also, to help keep track of stitch count, I have included how many shells there are at the end of each row within the stitch count brackets. As shells are worth 6 sts (2Dc, 2Ch, 2Dc) I have written it like so 'shells(6)'

Row 19: 1Dc in the next st, skip the next st,
(in the next Ch1sp make: 2Dc, 2Ch, 2Dc, skip the next 3 sts) x 21,
in the next Ch1sp make: 2Dc, 2Ch, 2Dc, skip the next st,
in the next Ch2sp make: 2Dc, 2Ch, 2Dc,
skip the next st, in the next Ch1sp make: 2Dc, 2Ch, 2Dc,
(skip the next 3 sts, in the next Ch1sp make: 2Dc, 2Ch, 2Dc) x 21,
skip the next st, make 1Trb in the next st.
[272 sts= 1Dc + 45 shells(6) + 1Trb]

Row 20: 1Dc in the next st, skip the next 2 sts,
(in the next Ch2sp make: 2Dc, 2Ch, 2Dc, skip the next 4 sts) x 22,
in the next Ch2sp make: 2Dc, 2Ch, 2Dc, 2Ch, 2Dc, 2Ch, 2Dc,
(skip the next 4 sts, in the next Ch2sp make: 2Dc, 2Ch, 2Dc) x 22,
skip the next 2 sts, 1Trb in the next st.
[280 sts = 1Dc + 23 shells(6) + 2Ch + 23 shells(6) + 1Trb]

Row 21: 1Dc in the next st, skip the next 2 sts,
(in the next Ch2sp make: 2Dc, 2Ch, 2Dc, skip the next 4 sts) x 22,
in the next Ch2sp make: 2Dc, 2Ch, 2Dc, skip the next 2 sts,
in the next Ch2sp make: 2Dc, 2Ch, 2Dc,
skip the next 2 sts, in the next Ch2sp make: 2Dc, 2Ch, 2Dc,

(skip the next 4 sts, in the next Ch2sp make: 2Dc, 2Ch, 2Dc) x 22,
skip the next 2 sts, 1Trb in the next st.
[284 sts = 1Dc + 47 shells(6) + 1Trb]

Row 22: 1Dc in the next st, skip the next 2 sts,
(in the next Ch2sp make: 2Dc, 2Ch, 2Dc, skip the next 4 sts) x 23,
in the next Ch2sp make: 2Dc, 2Ch, 2Dc, 2Ch, 2Dc, 2Ch, 2Dc,
(skip the next 4 sts, in the next Ch2sp make: 2Dc, 2Ch, 2Dc) x 23,
skip the next 2 sts, 1Trb in the next st.
[292 sts = 1Dc + 24 shells(6) + 2Ch + 24 shells(6) + 1Trb]

From here, in every fourth row, we will increase the size of the shells within the upper 'wings' section. We do this by working Double Crochet stitches into the stitches either side of the Chain 2 Spaces. To help keep track of stitch count, these larger shells also have their stitch quantity placed after them within the stitch count brackets, like so: 'shells(8)'.

Row 23: 1Dc in the next st, skip the next st,
(make 1Dc in the next st, in the next Ch2sp make: 2Dc, 2Ch, 2Dc,
make 1Dc in the next st, skip the next 2 sts) x 12,
skip the next st,
(in the next Ch2sp make: 2Dc, 2Ch, 2Dc, skip the next 4 sts) x 11,
in the next Ch2sp make: 2Dc, 2Ch, 2Dc, skip the next 2 sts,
in the next Ch2sp make: 2Dc, 2Ch, 2Dc,
skip the next 2 sts, in the next Ch2sp make: 2Dc, 2Ch, 2Dc,
(skip the next 4 sts, in the next Ch2sp make: 2Dc, 2Ch, 2Dc) x 11,
skip the next st,
(skip the next 2 sts, make 1Dc in the next st, in the next Ch2sp make: 2Dc, 2Ch, 2Dc,
make 1Dc in the next st) x 12,
skip the next st, 1Trb in the next st.
[344 sts = 1Dc + 12 shells(6) + 25 shells(6) + 12 shells(8) + 1Trb]

Row 24: 1Dc in the next st, skip the next 2 sts,
(make 1Dc in the next st, in the next Ch2sp make: 2Dc, 2Ch, 2Dc,
make 1Dc in the next st, skip the next 4 sts) x 12,
(in the next Ch2sp make: 2Dc, 2Ch, 2Dc, skip the next 4 sts) x 12,
in the next Ch2sp make: 2Dc, 2Ch, 2Dc, 2Ch, 2Dc, 2Ch, 2Dc,
(skip the next 4 sts, in the next Ch2sp make: 2Dc, 2Ch, 2Dc) x 12,
(skip the next 4 sts, make 1Dc in the next st, in the next Ch2sp make: 2Dc, 2Ch, 2Dc,
make 1Dc in the next st) x 12,
skip the next 2 sts, 1Trb in the next st.
[352 sts = 1Dc + 12 shells(8) + 13 shells(6) + 2Ch + 13 shells(6) + 12 shells(8) + 1Trb]

Row 25: 1Dc in the next st, skip the next 2 sts,
(make 1Dc in the next st, in the next Ch2sp make: 2Dc, 2Ch, 2Dc,
make 1Dc in the next st, skip the next 4 sts) x 12,
(in the next Ch2sp make: 2Dc, 2Ch, 2Dc, skip the next 4 sts) x 12,
in the next Ch2sp make: 2Dc, 2Ch, 2Dc, skip the next 2 sts,
in the next Ch2sp make: 2Dc, 2Ch, 2Dc,
skip the next 2 sts, in the next Ch2sp make: 2Dc, 2Ch, 2Dc,
(skip the next 4 sts, in the next Ch2sp make: 2Dc, 2Ch, 2Dc) x 12,
(skip the next 4 sts, make 1Dc in the next st, in the next Ch2sp make: 2Dc, 2Ch, 2Dc,
make 1Dc in the next st) x 12,
skip the next 2 sts, 1Trb in the next st.
[356 sts = 1Dc + 12 shells(8) + 27 shells(6) + 12 shells(8) + 1Trb]

- Row 26: 1Dc in the next st, skip the next 2 sts,
 (make 1Dc in the next st, in the next Ch2sp make: 2Dc, 2Ch, 2Dc,
 make 1Dc in the next st, skip the next 4 sts) x 12,
 (in the next Ch2sp make: 2Dc, 2Ch, 2Dc, skip the next 4 sts) x 13,
in the next Ch2sp make: 2Dc, 2Ch, 2Dc, 2Ch, 2Dc, 2Ch, 2Dc,
 (skip the next 4 sts, in the next Ch2sp make: 2Dc, 2Ch, 2Dc) x 13,
 (skip the next 4 sts, make 1Dc in the next st, in the next Ch2sp make: 2Dc, 2Ch, 2Dc,
 make 1Dc in the next st) x 12,
 skip the next 2 sts, 1Trb in the next st.
 [364 sts = 1Dc + 12 shells(8) + 14 shells(6) + 2Ch + 14 shells(6) + 12 shells(8) + 1Trb]
- Row 27: 1Dc in the next st, skip the next st,
 (make 1Dc in each of the next 2 sts, in the next Ch2sp make: 2Dc, 2Ch, 2Dc,
 make 1Dc in each of the the next 2 sts, skip the next 2 sts) x 12,
 skip the next st,
 (in the next Ch2sp make: 2Dc, 2Ch, 2Dc, skip the next 4 sts) x 13,
 in the next Ch2sp make: 2Dc, 2Ch, 2Dc, skip the next 2 sts,
in the next Ch2sp make: 2Dc, 2Ch, 2Dc,
 skip the next 2 sts, in the next Ch2sp make: 2Dc, 2Ch, 2Dc,
 (skip the next 4 sts, in the next Ch2sp make: 2Dc, 2Ch, 2Dc) x 13,
 skip the next st,
 (skip the next 2 sts, make 1Dc in each of the next 2 sts, in the next Ch2sp make: 2Dc, 2Ch,
2Dc, make 1Dc in each of the next 2 sts) x 12,
 skip the next st, 1Trb in the next st.
 [416 sts = 1Dc + 12 shells(10) + 29 shells(6) + 12 shells(10) + 1Trb]
- Row 28: 1Dc in the next st, skip the next 2 sts,
 (make 1Dc in each of the next 2 sts, in the next Ch2sp make: 2Dc, 2Ch, 2Dc,
 make 1Dc in each of the next 2 sts, skip the next 4 sts) x 12,
 (in the next Ch2sp make: 2Dc, 2Ch, 2Dc, skip the next 4 sts) x 14,
in the next Ch2sp make: 2Dc, 2Ch, 2Dc, 2Ch, 2Dc, 2Ch, 2Dc,
 (skip the next 4 sts, in the next Ch2sp make: 2Dc, 2Ch, 2Dc) x 14,
 (skip the next 4 sts, make 1Dc in each of the next 2 sts, in the next Ch2sp make: 2Dc, 2Ch,
2Dc, make 1Dc in each of the next 2 sts) x 12,
 skip the next 2 sts, 1Trb in the next st.
 [424 sts = 1Dc + 12 shells(10) + 15 shells(6) + 2Ch + 15 shells(6) + 12 shells(10) + 1Trb]
- Row 29: 1Dc in the next st, skip the next 2 sts,
 (make 1Dc in each of the next 2 sts, in the next Ch2sp make: 2Dc, 2Ch, 2Dc,
 make 1Dc in each of the next 2 sts, skip the next 4 sts) x 12,
 (in the next Ch2sp make: 2Dc, 2Ch, 2Dc, skip the next 4 sts) x 14,
 in the next Ch2sp make: 2Dc, 2Ch, 2Dc, skip the next 2 sts,
in the next Ch2sp make: 2Dc, 2Ch, 2Dc,
 skip the next 2 sts, in the next Ch2sp make: 2Dc, 2Ch, 2Dc,
 (skip the next 4 sts, in the next Ch2sp make: 2Dc, 2Ch, 2Dc) x 14,
 (skip the next 4 sts, make 1Dc in each of the next 2 sts, in the next Ch2sp make: 2Dc, 2Ch,
2Dc, make 1Dc in each of the next 2 sts) x 12,
 skip the next 2 sts, 1Trb in the next st.
 [428 sts = 1Dc + 12 shells(10) + 31 shells(6) + 12 shells(10) + 1Trb]
- Row 30: 1Dc in the next st, skip the next 2 sts,
 (make 1Dc in each of the next 2 sts, in the next Ch2sp make: 2Dc, 2Ch, 2Dc,
 make 1Dc in each of the next 2 sts, skip the next 4 sts) x 12,
 (in the next Ch2sp make: 2Dc, 2Ch, 2Dc, skip the next 4 sts) x 15,
in the next Ch2sp make: 2Dc, 2Ch, 2Dc, 2Ch, 2Dc, 2Ch, 2Dc,

(skip the next 4 sts, in the next Ch2sp make: 2Dc, 2Ch, 2Dc) x 15,
 (skip the next 4 sts, make 1Dc in each of the next 2 sts, in the next Ch2sp make: 2Dc, 2Ch, 2Dc, make 1Dc in each of the next 2 sts) x 12,
 skip the next 2 sts, 1Trb in the next st.
 [436 sts = 1Dc + 12 shells(10) + 16 shells(6) + 2Ch + 16 shells(6) + 12 shells(10) + 1Trb]

Row 31: 1Dc in the next st, skip the next st,
 (make 1Dc in each of the next 3 sts, in the next Ch2sp make: 2Dc, 2Ch, 2Dc, make 1Dc in each of the the next 3 sts, skip the next 2 sts) x 12,
 skip the next st,
 (in the next Ch2sp make: 2Dc, 2Ch, 2Dc, skip the next 4 sts) x 15,
 in the next Ch2sp make: 2Dc, 2Ch, 2Dc, skip the next 2 sts,
in the next Ch2sp make: 2Dc, 2Ch, 2Dc,
 skip the next 2 sts, in the next Ch2sp make: 2Dc, 2Ch, 2Dc,
 (skip the next 4 sts, in the next Ch2sp make: 2Dc, 2Ch, 2Dc) x 15,
 skip the next st,
 (skip the next 2 sts, make 1Dc in each of the next 3 sts, in the next Ch2sp make: 2Dc, 2Ch, 2Dc, make 1Dc in each of the next 3 sts) x 12,
 skip the next st, 1Trb in the next st.
 [488 sts = 1Dc + 12 shells(12) + 33 shells(6) + 12 shells(12) + 1Trb]

Row 32: 1Dc in the next st, skip the next 2 sts,
 (make 1Dc in each of the next 3 sts, in the next Ch2sp make: 2Dc, 2Ch, 2Dc, make 1Dc in each of the next 3 sts, skip the next 4 sts) x 12,
 (in the next Ch2sp make: 2Dc, 2Ch, 2Dc, skip the next 4 sts) x 16,
in the next Ch2sp make: 2Dc, 2Ch, 2Dc, 2Ch, 2Dc, 2Ch, 2Dc,
 (skip the next 4 sts, in the next Ch2sp make: 2Dc, 2Ch, 2Dc) x 16,
 (skip the next 4 sts, make 1Dc in each of the next 3 sts, in the next Ch2sp make: 2Dc, 2Ch, 2Dc, make 1Dc in each of the next 3 sts) x 12,
 skip the next 2 sts, 1Trb in the next st.
 [496 sts = 1Dc + 12 shells(12) + 17 shells(6) + 2Ch + 17 shells(6) + 12 shells(12) + 1Trb]

Row 33: 1Dc in the next st, skip the next 2 sts,
 (make 1Dc in each of the next 3 sts, in the next Ch2sp make: 2Dc, 2Ch, 2Dc, make 1Dc in each of the next 3 sts, skip the next 4 sts) x 12,
 (in the next Ch2sp make: 2Dc, 2Ch, 2Dc, skip the next 4 sts) x 16,
 in the next Ch2sp make: 2Dc, 2Ch, 2Dc, skip the next 2 sts,
in the next Ch2sp make: 2Dc, 2Ch, 2Dc,
 skip the next 2 sts, in the next Ch2sp make: 2Dc, 2Ch, 2Dc,
 (skip the next 4 sts, in the next Ch2sp make: 2Dc, 2Ch, 2Dc) x 16,
 (skip the next 4 sts, make 1Dc in each of the next 3 sts, in the next Ch2sp make: 2Dc, 2Ch, 2Dc, make 1Dc in each of the next 3 sts) x 12,
 skip the next 2 sts, 1Trb in the next st.
 [500 sts = 1Dc + 12 shells(12) + 35 shells(6) + 12 shells(12) + 1Trb]

Row 34: 1Dc in the next st, skip the next 2 sts,
 (make 1Dc in each of the next 3 sts, in the next Ch2sp make: 2Dc, 2Ch, 2Dc, make 1Dc in each of the next 3 sts, skip the next 4 sts) x 12,
 (in the next Ch2sp make: 2Dc, 2Ch, 2Dc, skip the next 4 sts) x 17,
in the next Ch2sp make: 2Dc, 2Ch, 2Dc, 2Ch, 2Dc, 2Ch, 2Dc,
 (skip the next 4 sts, in the next Ch2sp make: 2Dc, 2Ch, 2Dc) x 17,
 (skip the next 4 sts, make 1Dc in each of the next 3 sts, in the next Ch2sp make: 2Dc, 2Ch, 2Dc, make 1Dc in each of the next 3 sts) x 12,
 skip the next 2 sts, 1Trb in the next st.
 [508 sts = 1Dc + 12 shells(12) + 18 shells(6) + 2Ch + 18 shells(6) + 12 shells(12) + 1Trb]

Row 35: 1Dc in the next st, skip the next st,
 (make 1Dc in each of the next 4 sts, in the next Ch2sp make: 2Dc, 2Ch, 2Dc,
 make 1Dc in each of the next 4 sts, skip the next 2 sts) x 12,
 skip the next st,
 (in the next Ch2sp make: 2Dc, 2Ch, 2Dc, skip the next 4 sts) x 17,
 in the next Ch2sp make: 2Dc, 2Ch, 2Dc, skip the next 2 sts,
in the next Ch2sp make: 2Dc, 2Ch, 2Dc,
 skip the next 2 sts, in the next Ch2sp make: 2Dc, 2Ch, 2Dc,
 (skip the next 4 sts, in the next Ch2sp make: 2Dc, 2Ch, 2Dc,) x 17,
 skip the next st,
 (skip the next 2 sts, make 1Dc in each of the next 4 sts, in the next Ch2sp make: 2Dc, 2Ch,
2Dc, make 1Dc in each of the next 4 sts) x 12,
 skip the next st, 1Trb in the next st.
 [560 sts = 1Dc + 12 shells(14) + 37 shells(6) + 12 shells(14) + 1Trb]

Row 36: 1Dc in the next st, skip the next 2 sts,
 (make 1Dc in each of the next 4 sts, in the next Ch2sp make: 2Dc, 2Ch, 2Dc,
 make 1Dc in each of the next 4 sts, skip the next 4 sts) x 12,
 (in the next Ch2sp make: 2Dc, 2Ch, 2Dc, skip the next 4 sts) x 18,
in the next Ch2sp make: 2Dc, 2Ch, 2Dc, 2Ch, 2Dc, 2Ch, 2Dc,
 (skip the next 4 sts, in the next Ch2sp make: 2Dc, 2Ch, 2Dc,) x 18,
 (skip the next 4 sts, make 1Dc in each of the next 4 sts, in the next Ch2sp make: 2Dc, 2Ch,
2Dc, make 1Dc in each of the next 4 sts) x 12,
 skip the next 2 sts, 1Trb in the next st.
 [568 sts = 1Dc + 12 shells(14) + 19 shells(6) + 2Ch + 19 shells(6) + 12 shells(14) + 1Trb]

Row 37: 1Dc in the next st, skip the next 2 sts,
 (make 1Dc in each of the next 4 sts, in the next Ch2sp make: 2Dc, 2Ch, 2Dc,
 make 1Dc in each of the next 4 sts, skip the next 4 sts) x 12,
 (in the next Ch2sp make: 2Dc, 2Ch, 2Dc, skip the next 4 sts) x 18,
 in the next Ch2sp make: 2Dc, 2Ch, 2Dc, skip the next 2 sts,
in the next Ch2sp make: 2Dc, 2Ch, 2Dc,
 skip the next 2 sts, in the next Ch2sp make: 2Dc, 2Ch, 2Dc,
 (skip the next 4 sts, in the next Ch2sp make: 2Dc, 2Ch, 2Dc,) x 18,
 (skip the next 4 sts, make 1Dc in each of the next 4 sts, in the next Ch2sp make: 2Dc, 2Ch,
2Dc, make 1Dc in each of the next 4 sts) x 12,
 skip the next 2 sts, 1Trb in the next st.
 [572 sts = 1Dc + 12 shells(14) + 39 shells(6) + 12 shells(14) + 1Trb]

Row 38: 1Dc in the next st, skip the next 2 sts,
 (make 1Dc in each of the next 4 sts, in the next Ch2sp make: 2Dc, 2Ch, 2Dc,
 make 1Dc in each of the next 4 sts, skip the next 4 sts) x 12,
 (in the next Ch2sp make: 2Dc, 2Ch, 2Dc, skip the next 4 sts) x 19,
in the next Ch2sp make: 2Dc, 2Ch, 2Dc, 2Ch, 2Dc, 2Ch, 2Dc,
 (skip the next 4 sts, in the next Ch2sp make: 2Dc, 2Ch, 2Dc,) x 19,
 (skip the next 4 sts, make 1Dc in each of the next 4 sts, in the next Ch2sp make: 2Dc, 2Ch,
2Dc, make 1Dc in each of the next 4 sts) x 12,
 skip the next 2 sts, 1Trb in the next st.
 [580 sts = 1Dc + 12 shells(14) + 20 shells(6) + 2Ch + 20 shells(6) + 12 shells(14) + 1Trb]

That's the final row complete! The next step is blocking, however this is not always necessary, it really depends on how your shawl looks and feels to you. Blocking stretches it out a little, while making the tips of the shells a bit more dramatic.

Blocking Tips

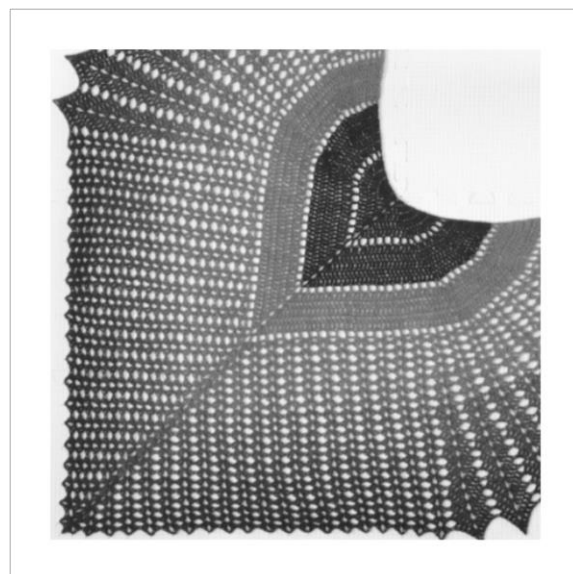
I blocked my shawl to enhance the shell edges and to stretch it out a bit, so there was little change in size before and after blocking. See the before and after of the shells in the images below:



After blocking, from the top of one wing tip, through the centre starting point and down to the straight edge on the opposite side, my shawl measured approx. 110cm/43", so I required a blocking area of 116cm/45" square.

- Soak your shawl and remove excess water (use methods best suited to your yarn choice)
- Lay out your shawl
- Locate a corner of your blocking area and pin the centre shell in place
- Line up the shells of the lower half of your shawl with the straight edges of your blocking area (as in the picture opposite)

As you can see, it should line up nicely along the 2 edges, making a 90 degree angle, however don't worry if this is not the case, as everyone's tension is different.



With these shells pinned out, you will now have a good idea of where to pin the central starting point of your shawl. This will then give you the central point at which to gently pull and pin out each 'wing' shell tip.

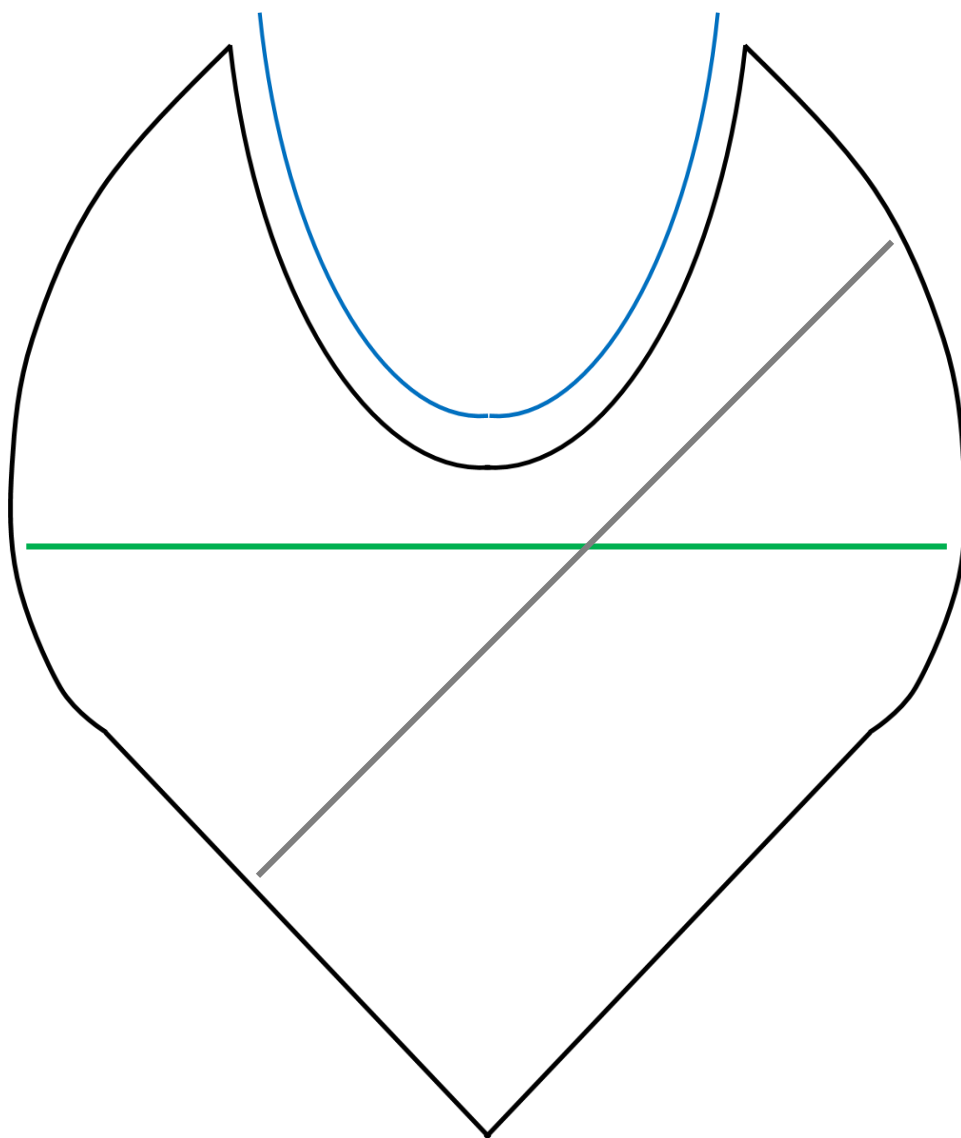
I only pinned the shawl's centre point, the 2 top points (these are the first and last stitches of the last row) and the center of each shell (of the last row).

Enjoy your finished object!
(after weaving in those ends, of course!)

Size Guide

(with approximate measurements after blocking,
when worked in a size 3.5mm/US:E hook with fingering weight yarn)

Curved (Blue) Line = 138cm/54"
Diagonal (Gray) Line = 110cm/43"
Horizontal (Green) Line = 103cm/41"

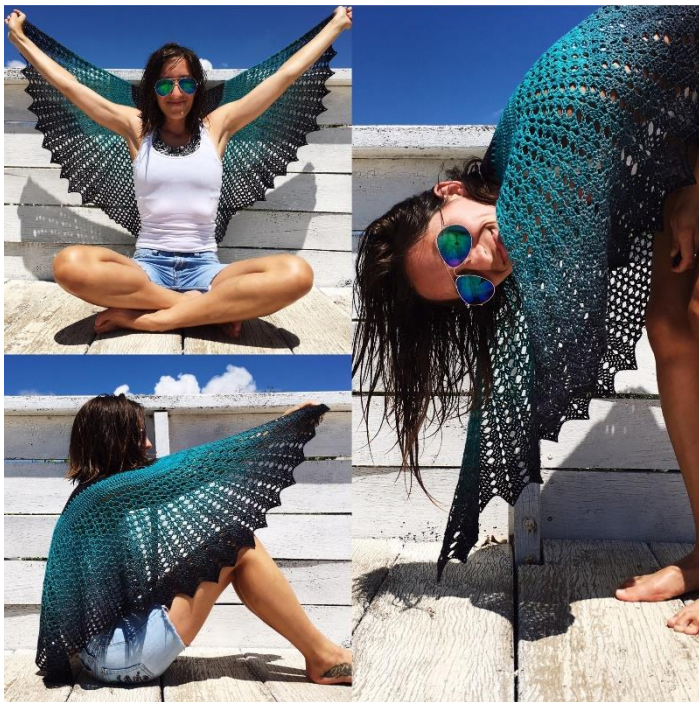


The Story Behind The Design

(and ways to wear your shawl, in pictures)

by Lorraine Pugh

"As she felt the fierce chilling winds all around her dangling body and spits of icy ocean numbing her skin, there was the warmth of her sister's embracing hand. Raucous caws of boisterous jackdaws and the black of the wet jagged rocks beneath her. Above, the light, elegant beauty of her younger sibling, whose charm and grace stole the heart of many, including that of the man they both loved.



The cliff edge began to crumble even more, putting them both in danger. In that moment she knew. To hold on would undoubtedly leave their aging father forever searching for 2 lost souls. It would deny a young man children with his one true love. But, if she let go, she would save the life of her beloved sister, and thus, the story of a blossoming family could unfold..."



