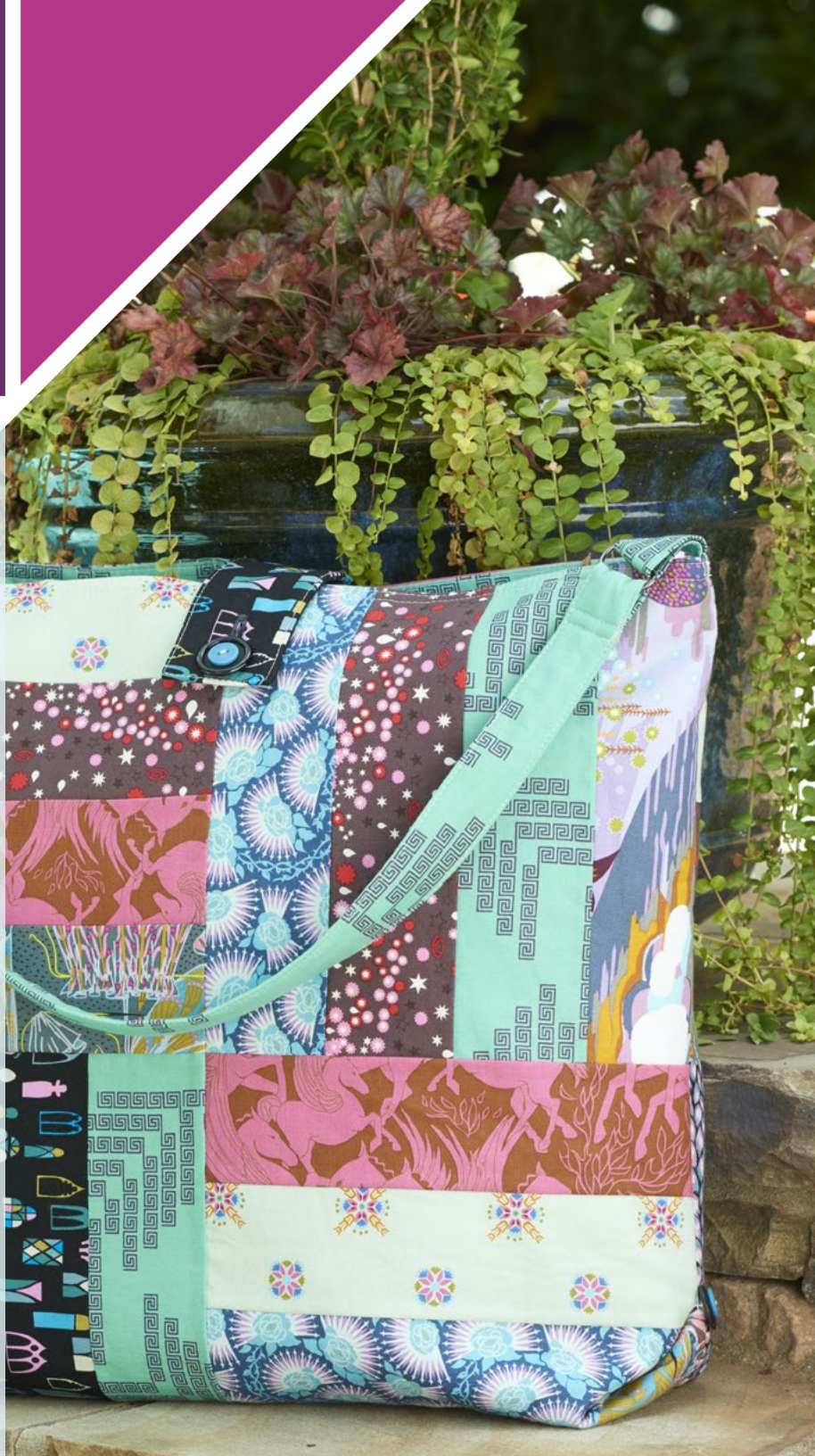


# Patchwork Carryall

**Skill Level:**  
Intermediate

**Featuring:**  
Fibs and Fables  
by Anna Maria  
Horner



<b>Technique:</b>	Sewing and Patchwork
<b>Designed By:</b>	Melissa Peda
<b>Brand:</b>	FreeSpirit
<b>Crafting Time:</b>	Weekend

## Finished Size

15" x 5" x 15" (38.1cm x 12.7 cm x 38.1 cm)

## Supplies

### Fibs and Fables by Anna Maria Horner

(A) PWAH094.SLEEP	Fat quarter (45.72cm x 55.88cm)
(B) PWAH095.FLINT	Fat quarter (45.72cm x 55.88cm)
(C) PWAH096.INCEN	Fat quarter (45.72cm x 55.88cm)
(D) PWAH097.BARKX	Fat quarter (45.72cm x 55.88cm)
(E) PWAH098.MIDNI	Fat quarter (45.72cm x 55.88cm)
(F) PWAH099.ALGAE	Fat quarter (45.72cm x 55.88cm)
(G) PWAH100.JADEX	Fat quarter (45.72cm x 55.88cm)
(H) PWAH101.SWORD	Fat quarter (45.72cm x 55.88cm)
(I) PWAH102.SILVE	Fat quarter (45.72cm x 55.88cm)
(J) PWAH100.JADEX	¾ yd. (.69cm) - Lining

## Additional Requirements

20" x 40" (50.8 cm x 101.6 cm) piece of fusible fleece  
¾ yd. (81 cm) medium-weight interfacing  
One pair 1¼" (3.2 cm) D-Rings  
Four ⅞" (2.2 cm) dia. buttons and one ¼" (.64 cm) dia. button  
Coats & Clark Dual Duty XP® all-purpose thread in coordinating colors  
Embroidery thread and needle

freespiritfabric.com

FS0562AH

## Notes

Seam allowances are  $\frac{1}{4}$ " (.64 cm) unless stated otherwise.  
WOF -- Width of Fabric.

## Cutting Instructions

### Fabrics A through H, cut a total of:

- (32) 3" x 10 $\frac{1}{2}$ " (7.6 cm x 26.7 cm), for bag exterior (4 strips from each fabric)
- (2) 6 $\frac{1}{2}$ " (16.5 cm) squares, for pocket

### Fabric I, cut:

- (1) 3" x 10 $\frac{1}{2}$ " (7.6 cm x 26.7 cm), for closure

### Fabric J, cut:

- (1) 3" x 28" (7.6 cm x 71.1 cm), for strap
- (2) 3" x 5" (7.6 cm x 12.7 cm), for tabs
- (2) 21" (53.3 cm) squares (for lining).

## Interfacing

- (1) 3" x 28" (7.6 cm x 71.1 cm)
- (1) 3" x 10 $\frac{1}{2}$ " (7.6 cm x 26.7 cm)
- (2) 3" x 5" (7.6 cm x 12.7 cm)

## Sewing Instructions

### Patchwork

1. Sew one strip each of Fabrics **A** through **D** lengthwise together as shown in the photo, or in any order desired, to make one 10 $\frac{1}{2}$ " (26.7cm) square block. Press seams in one direction. Repeat to make a total of four blocks. Sew the Fabric **E** through **H** strips together in the same manner to make a total of four additional

blocks. Noting orientation, sew four blocks together (two of each color combination) to make one 20 $\frac{1}{2}$ " square panel for the front of the bag. **Diagram 1 on page 4** Repeat to make another panel for the back of the bag.

2. Sew the front panel to the back panel, right sides together along one side. **Diagram 2 on page 4** Press seam. Open and place face down.
3. Center the fusible fleece, adhesive side down, on the wrong side of the patchwork so that there is a  $\frac{1}{4}$ " (.64 cm) patchwork edge on all sides. Following manufacturer's instructions, fuse in place.
4. Quilt if desired.

### Pocket

5. Sew the two 6 $\frac{1}{2}$ " (16.5cm) squares right sides together all the way around the perimeter, leaving a 3" (7.62 cm) opening on one side for turning. Clip corners. Turn right side out and press. Slip stitch the opening closed. Topstitch along the top edge.
6. On the right side of the patchwork, at the seam where the two panels are joined, measure 5" (12.7 cm) down from top edge and mark. Place the top edge of the pocket on the mark, centering the pocket over the seam. Sew the pocket in place along the sides and bottom approximately  $\frac{1}{8}$ " (.32cm) away from the edges.

### Strap, Tabs, & Closure

7. Following manufacturer's instructions, apply interfacing to the wrong side of the pieces cut for the strap, tabs, and closure.

8. Right sides together, fold each tab lengthwise in half and sew along the 5" (12.7 cm) raw edge. **Diagram 3 on page 4** Turn right side out. Press with seam centered.
9. Repeat for strap, sewing along the 28" (71.1 cm) edge. Press. Edgestitch along both sides of strap.
10. Fold closure piece right sides together so that short ends meet. The piece now measures 3" x 5 $\frac{1}{4}$ " (7.6 cm x 13.3 cm). Sew down both sides. Clip corners. Turn right side out and press. Edgestitch around all finished edges. Make a buttonhole in the finished end.

### Bag Exterior

11. Right sides together, sew bottom and remaining side of bag.
12. Thread one tab through one D-ring. **Diagram 4 on page 5** Right sides together with raw edges even, pin at side, centering over seam. Be sure the tab's seam is against the D-ring. Baste in place. Repeat for other side.
13. Slide D-ring to fold of tab. Pin through tab to secure. Stitch across tab approximately  $\frac{1}{2}$ " (1.3 cm) or less from D-ring. Repeat on the other side.
14. On the right side of back of bag, center the raw edge of the closure over the center back seam. Baste in place.

### Lining

15. Sew Fabric **I** lining pieces, right sides together, along each side and across the bottom, leaving an opening of 5" (12.7 cm) at the bottom seam for turning. Clip corners. Press.

**Finishing**

16. Place bag exterior inside lining, right sides together. Sew around top edge. Be careful not to sew the tabs or closure in the seam. Turn right side out and press. Slipstitch opening closed.
17. Edgestitch along top edge of bag.
18. Topstitch  $\frac{1}{4}$ " (.64 cm) from edgestitching.
19. Press raw end of strap under  $\frac{1}{2}$ " (1.3 cm) to back side (side with seam). Repeat for other end. Thread one end of strap through D-ring. With folded end approximately 1" (2.5 cm) from D-ring, pin in place.  
**Diagram 5 on page 5** Sew across strap to secure, using box stitching as shown in diagram. Repeat for other side.
20. With lining snugly inside bag, fold up one corner  $2\frac{1}{2}$ " (6.4 cm) toward top of bag. **Diagram 6 on page 5** Secure in place with pins or clips. Using embroidery thread and sturdy needle, attach one button at the point. Stitch through all layers. Repeat for other side.
21. Add button to the center of bag front, 2" to  $2\frac{1}{2}$ " (5.1 cm to 6.4 cm) from top edge of bag.
22. Add remaining two buttons (stacked) to center of pocket, placing them 1" (2.5 cm) from top edge of pocket.



Diagram 1

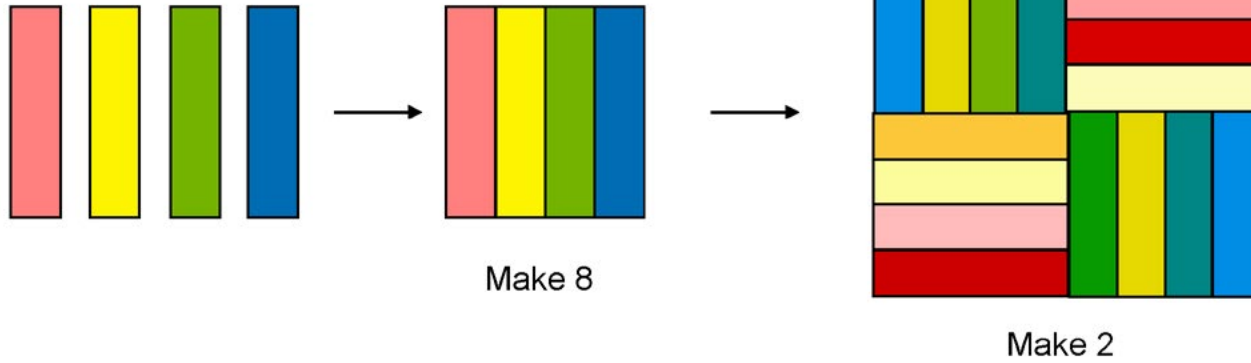


Diagram 2

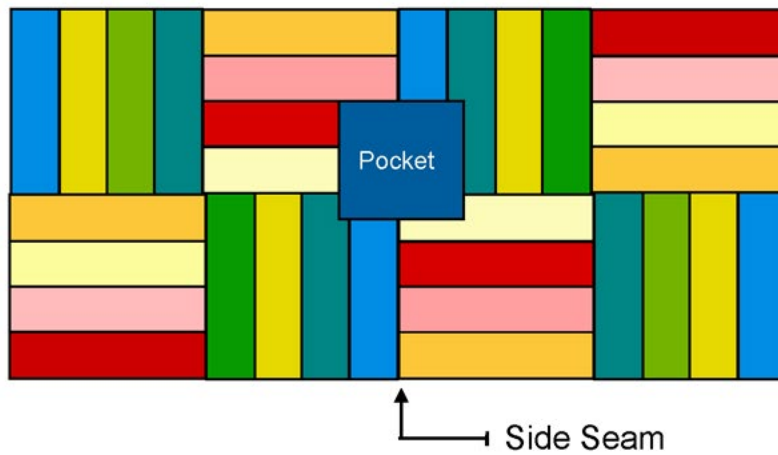


Diagram 3

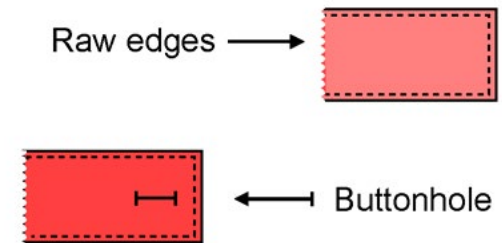


Diagram 4

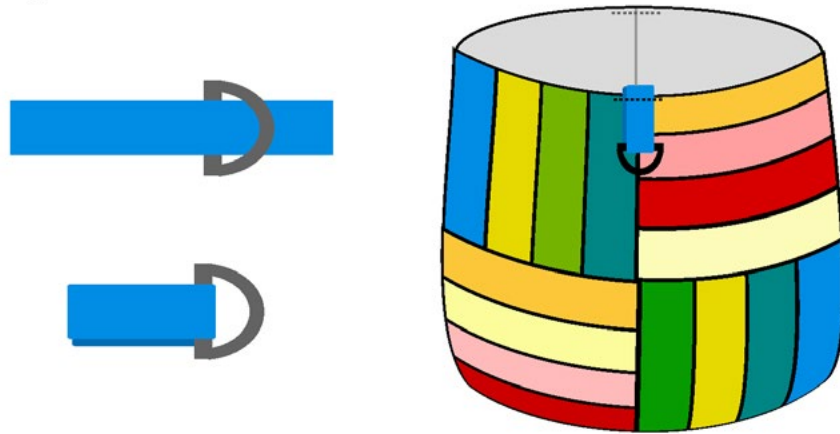


Diagram 6

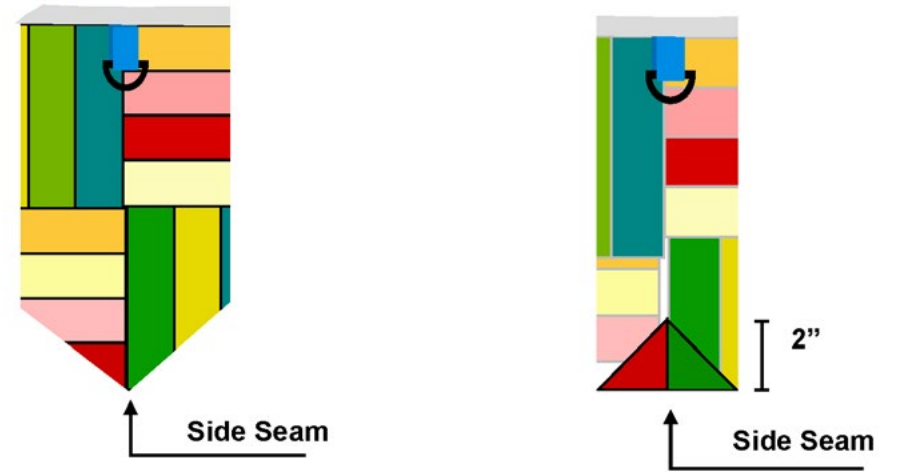


Diagram 5



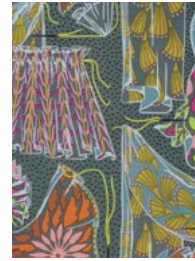
## Fabric Key

### Fibs and Fables by Anna Maria Horner

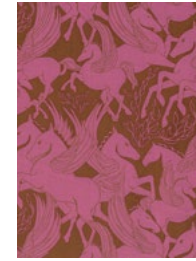
- (A) PWAH094.SLEEP Fat quarter (45.72cm x 55.88cm)
- (B) PWAH095.FLINT Fat quarter (45.72cm x 55.88cm)
- (C) PWAH096.INCEN Fat quarter (45.72cm x 55.88cm)
- (D) PWAH097.BARKX Fat quarter (45.72cm x 55.88cm)
- (E) PWAH098.MIDNI Fat quarter (45.72cm x 55.88cm)
- (F) PWAH099.ALGAE Fat quarter (45.72cm x 55.88cm)
- (G) PWAH100.JADEX Fat quarter (45.72cm x 55.88cm)
- (H) PWAH101.SWORD Fat quarter (45.72cm x 55.88cm)
- (I) PWAH102.SILVE Fat quarter (45.72cm x 55.88cm)
- (J) PWAH100.JADEX  $\frac{3}{4}$  yd. (.69cm) - Lining



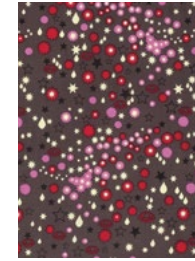
(A)



(B)



(C)



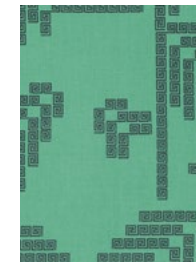
(D)



(E)



(F)



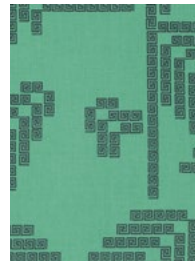
(G)



(H)



(I)



(J)